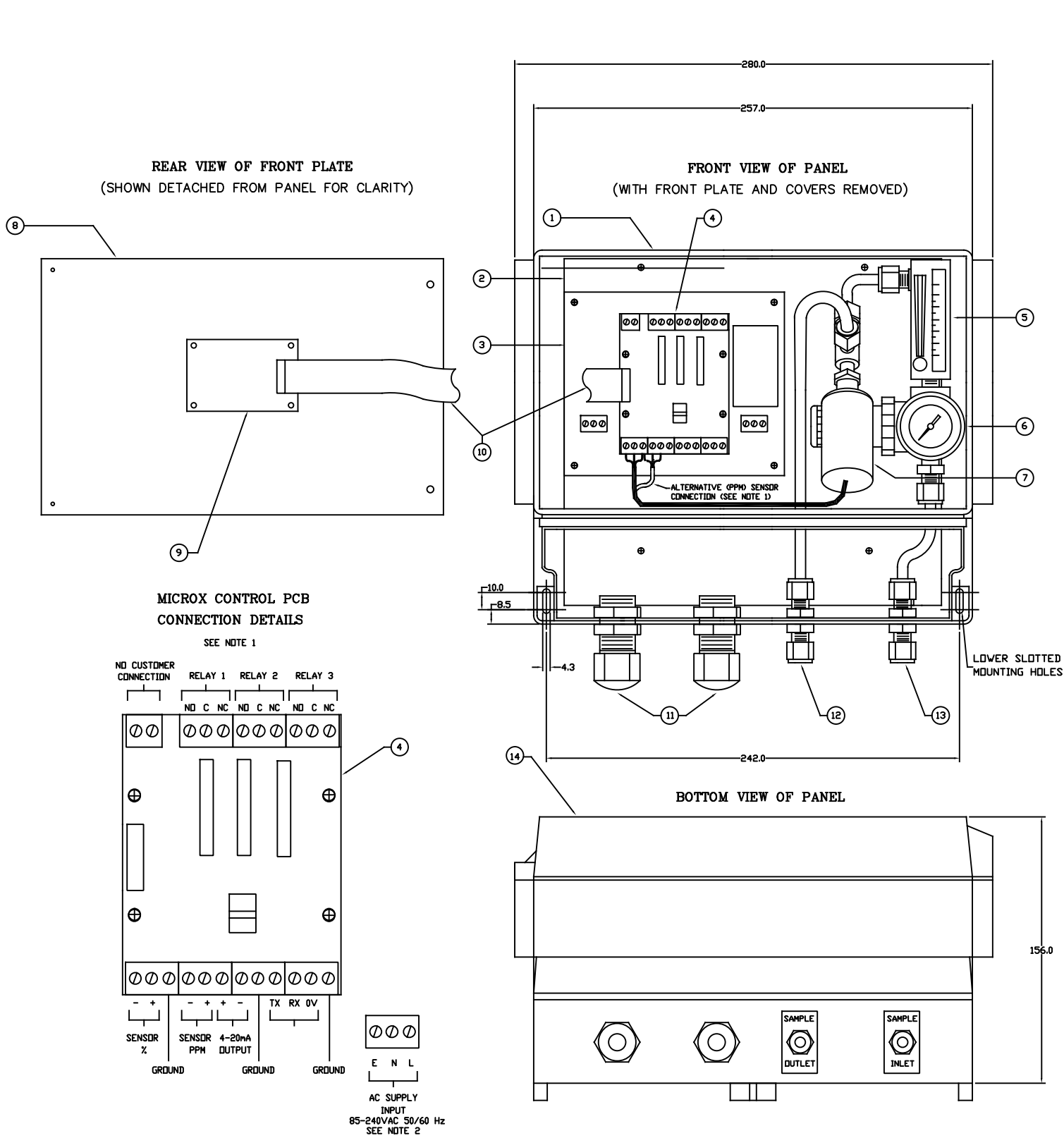


ITEM	DESCRIPTION
1	ABS ENCLOSURE
2	INTERNAL COMPONENT MOUNTING PLATE
3	MICROX MOTHERBOARD PCB
4	MICROX CONTROL PCB
5	SAMPLE FLOWMETER (SET @ 0.5 SCFH (250ml/min))
6	SAMPLE PRESSURE REGULATOR (SET@ 5PSIG)
7	OXYGEN SENSOR
8	FRONT PLATE
9	MICROX USER INTERFACE PCB
10	INTERCONNECTION RIBBON CABLE
11	CABLE GLANDS FOR ELECTRICAL CONNECTIONS
12	'SAMPLE OUTLET', 6MM TUBE OR 1/4"
13	'SAMPLE INLET', 6MM TUBE OR 1/4"
14	HINGED TRANSPARENT COVER
15	FRONT PLATE LABEL
16	DISPLAY AND PUSH BUTTONS (PART OF ITEM 9)
17	LIGHT TOWER INDICATOR WITH SOUNDER



NOTE: 1. SENSOR CONNECTIONS TO BE MADE DIRECTLY TO THE MICROX CONTROL PCB TERMINALS. SENSOR TO CONNECT TO % OR PPM TERMINALS DEPENDANT ON SENSOR TYPE. (NORMALLY SUPPLIED WITH SENSOR FITTED & PRE-WIRED BY NTRON) ALL INTERFACE CONNECTIONS TO BE MADE DIRECTLY TO THE MICROX CONTROL PCB TERMINALS BY CUSTOMER. (CONSULT THE APPROPRIATE VERSION MICROX USER MANUAL FOR FURTHER DETAILS) RELAYS 1 AND 2 ARE USED TO CONTROL THE LIGHT TOWER AND ARE NOT AVAILABLE FOR CUSTOMER USE.

2. MAINS SUPPLY CONNECTION TO BE BROUGHT TO THESE TERMINALS, BY CUSTOMER. SUITABLE CIRCUIT ISOLATION AND PROTECTION TO BE PROVIDED BY CUSTOMER.

1	POINT 12 & 13 CHANGED TO INCLUDE 1/4"	CH	MW	MW	TITLE : MICROX ONLINE OXYGEN PURITY ANALYSER ELECTROCHEMICAL SENSOR DETAIL DRAWING	S.O.No	NOT VALID	DRAWING NUMBER	CKD.	APP.	DRN.	REV.
REV.	DESCRIPTION	DRN.	CHD.	APP		Q.No.	NOT VALID	SD012	CH	CH	MW	0
						SCALE	N.T.S					
					DATE	23-08-2019	PAGE	1	OF		1	